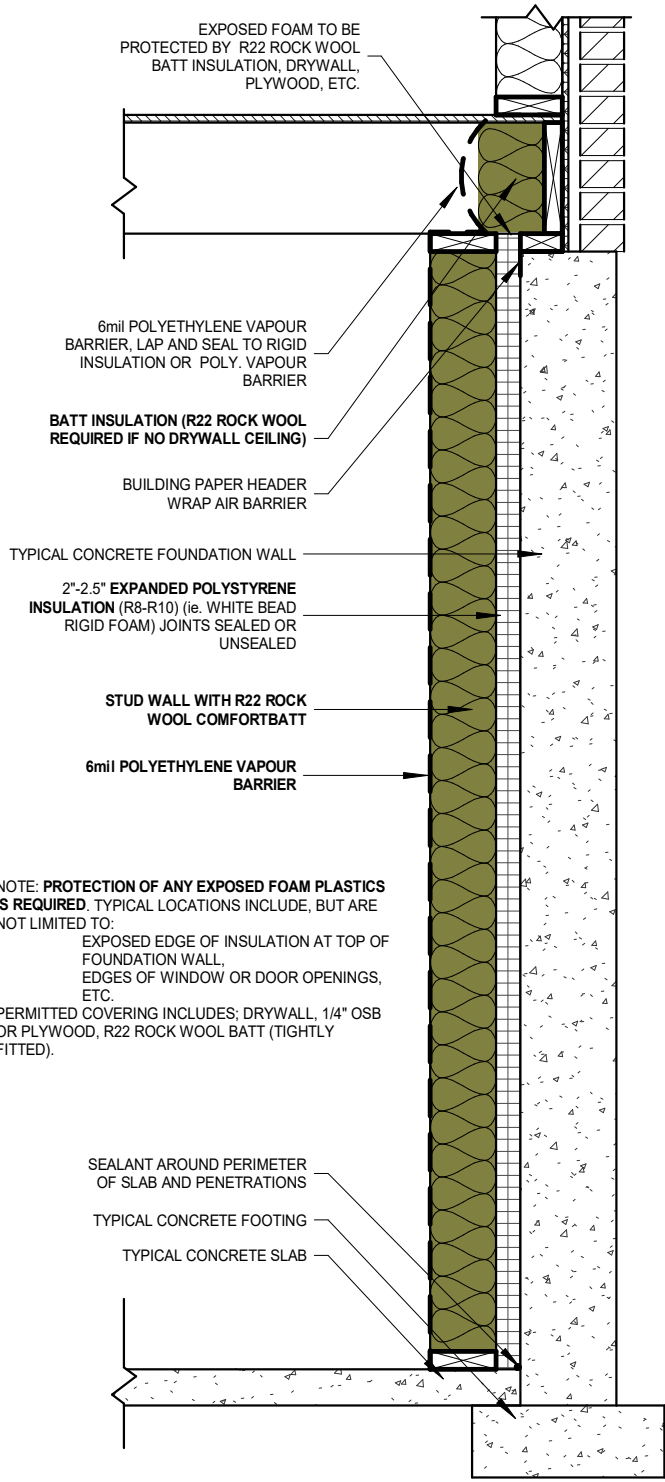
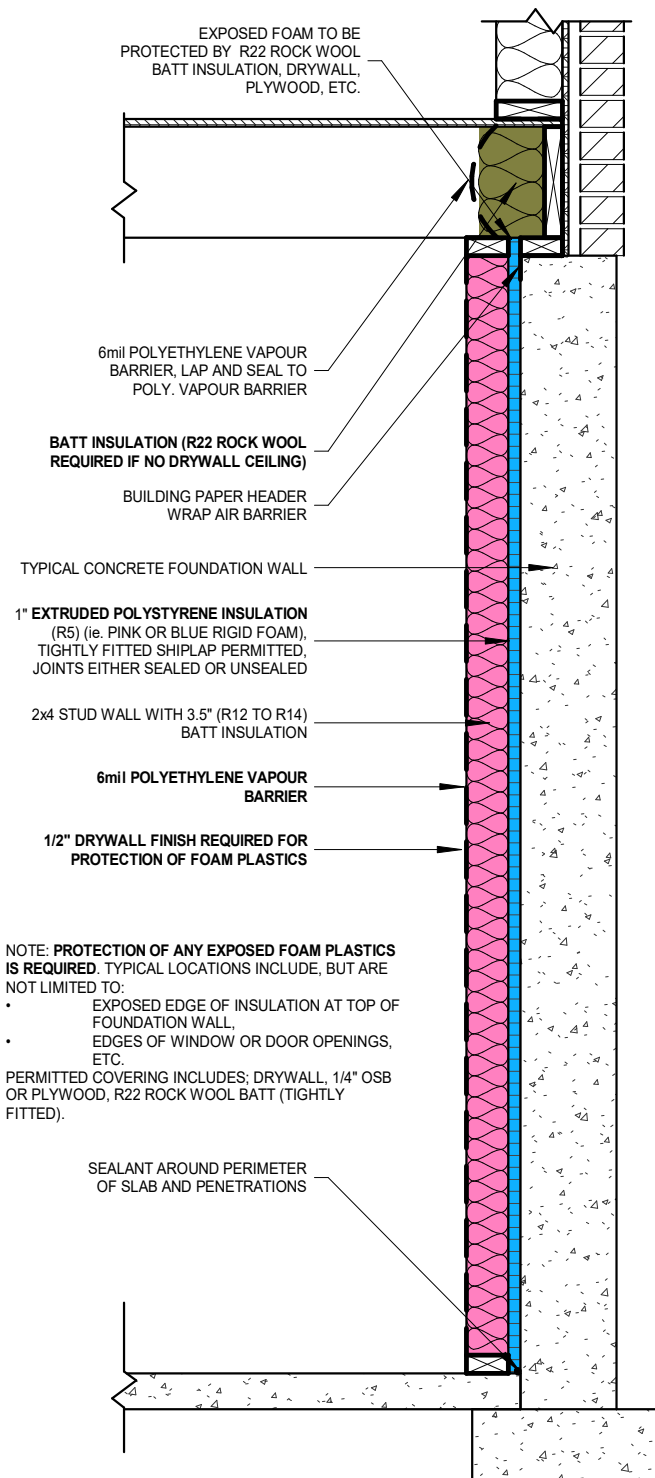


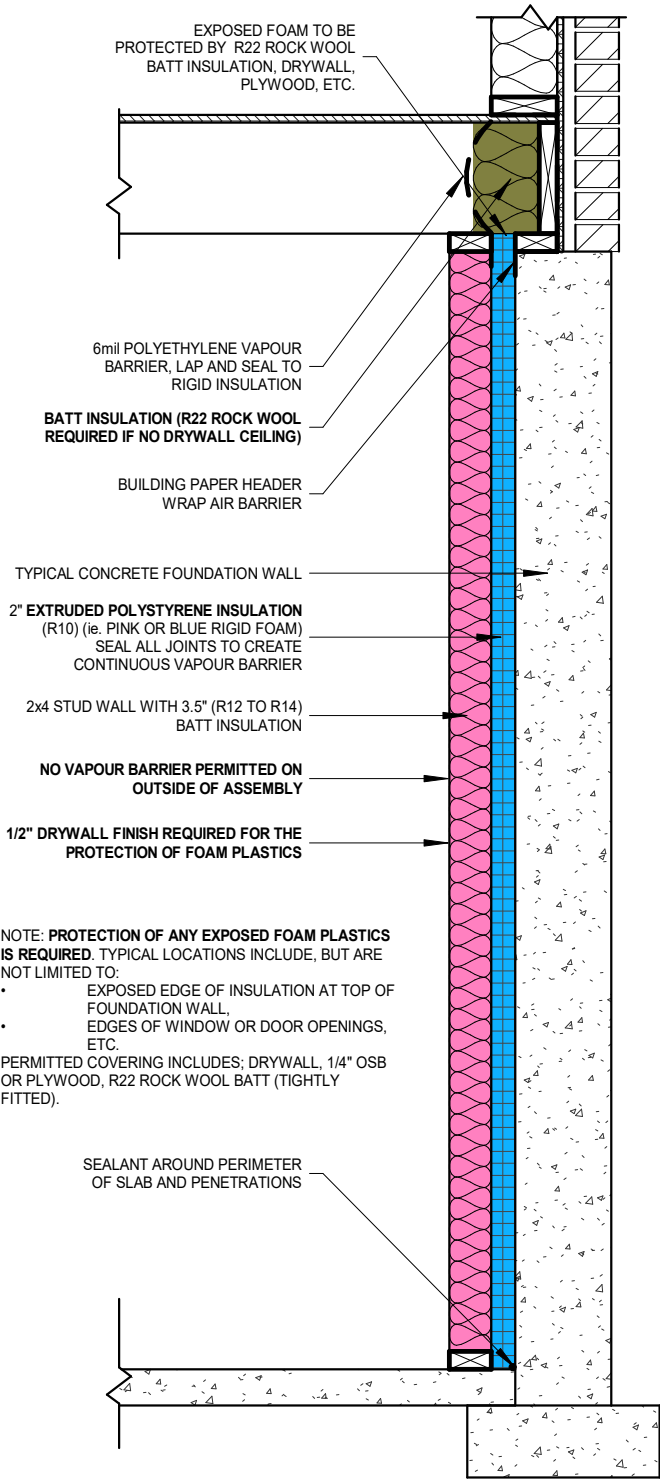
① EPS Foam CI w/Batt  
 3/4" = 1'-0"



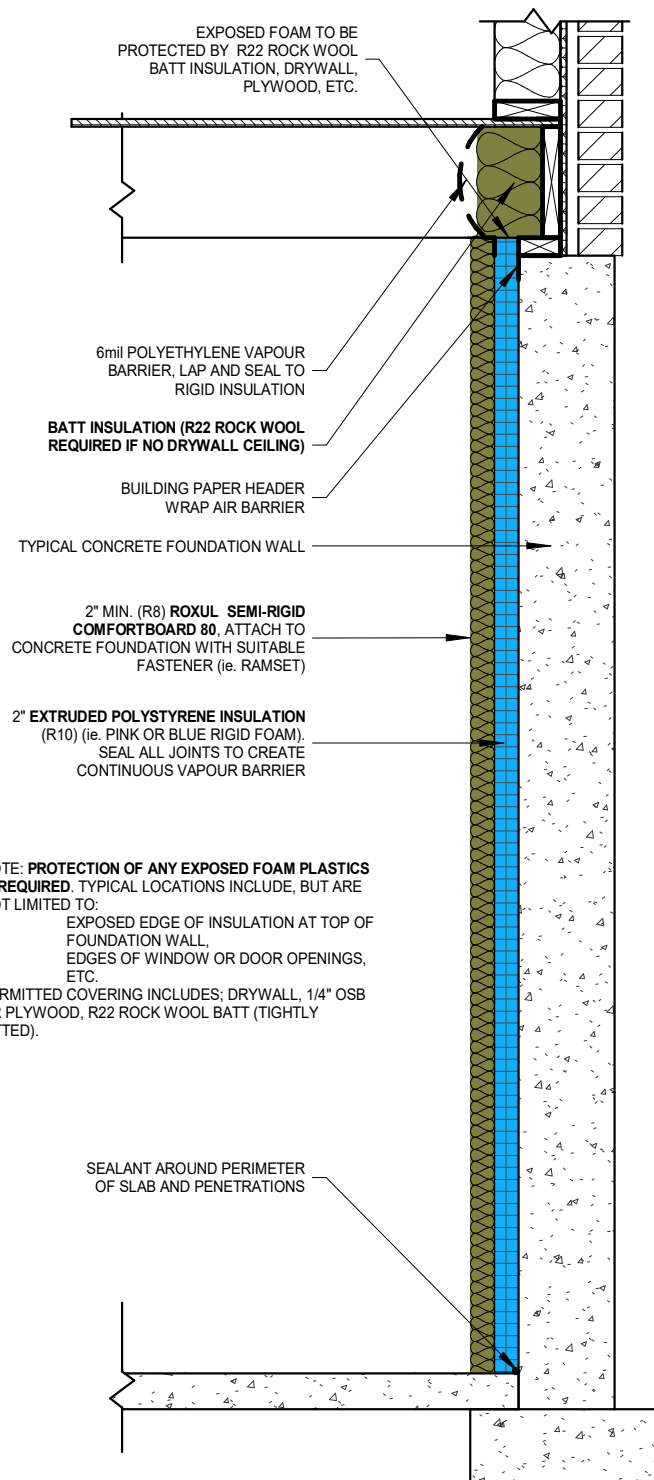
① EPS Foam CI w/Rock Wool  
3/4" = 1'-0"



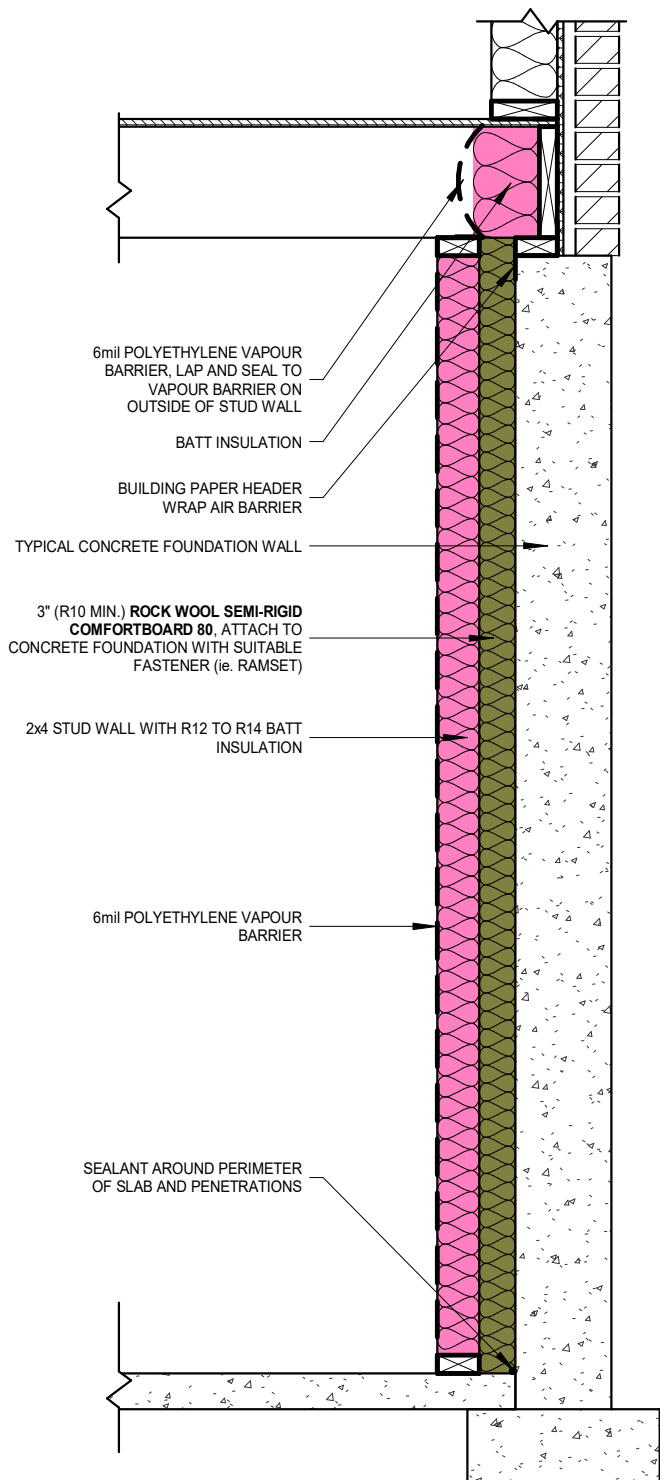
① XPS Foam CI w/Batt (A5)  
 3/4" = 1'-0"



① XPS Foam CI w/Batt (A1, A2, A3, A4, A6)  
3/4" = 1'-0"



1 XPS w/Rock Wool CI  
3/4" = 1'-0"



1 Rock Wool CI w/Batt  
 3/4" = 1'-0"